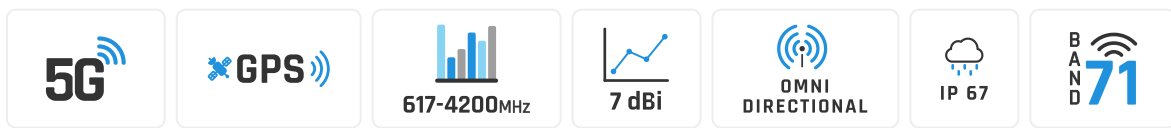


QuSpot for Teltonika TRB500

INTEGRATED MULTI-BAND LTE & 5G OMNI ANTENNA + PLACE TO INSTALL TELTONIKA TRB500 (ALL-IN-ONE)

QuSpot for TRB500 is an outdoor antenna designed to provide reliable wireless connectivity in a variety of environments. This product is an all in one solution that integrates a high gain omnidirectional 5G antennas with RUTX50 into a single IP67 enclosure. Such integration allows implementation of new outdoor TRB500 solutions. QuSpot for TRB500 is an ideal solution for outdoor wireless connectivity in moving applications such as transportation, yachting, boats and camping but also city centres with high signal density. For maximum performance a Gigabit PoE splitter is included in every set.

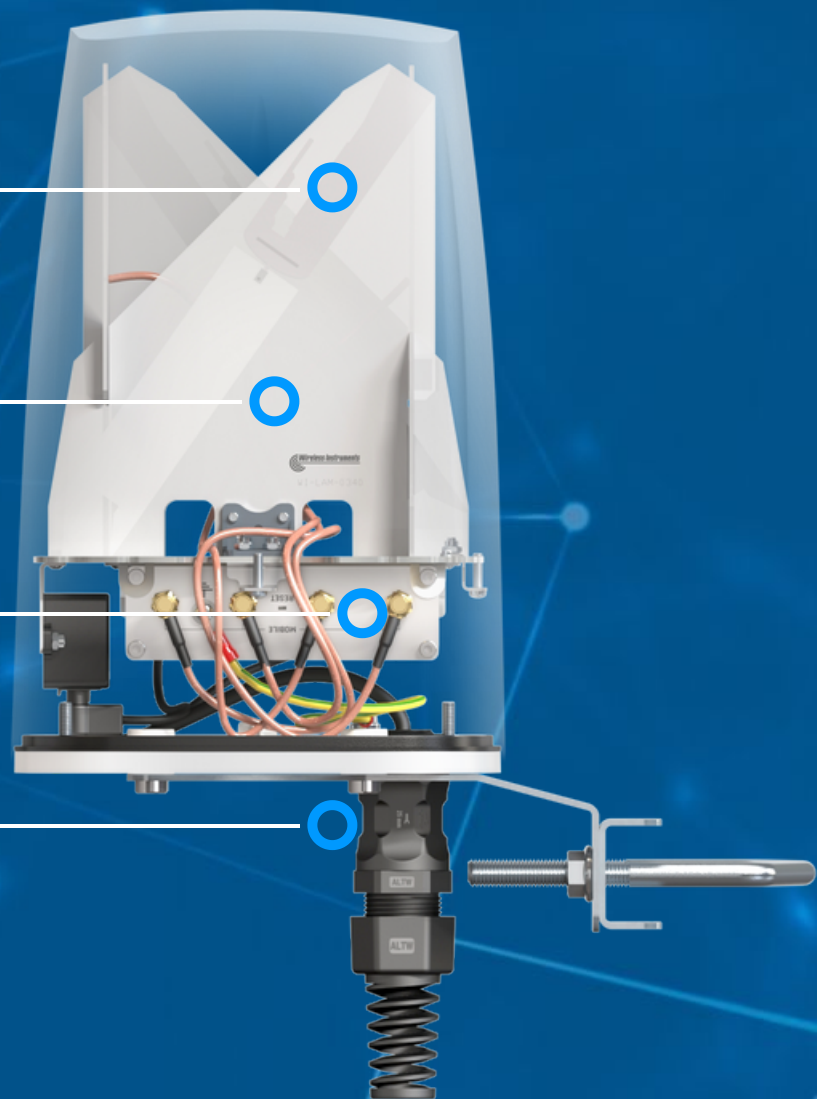


 OUTDOOR ANTENNA WORKS IN **ANY WEATHER CONDITIONS**, IP67

 ANTENNA **PERFECTLY MATCHED** WITH THE ROUTER

 PASSIVE **POE SUPPORT** WITH GIGABIT SPLITTER

 MADE IN **EUROPE**



5G ANTENNA SPECIFICATION

FREQUENCY	617 - 960 MHz 1.7 - 2.7 GHz 3.3 - 4.3 GHz
SUPPORTED LTE/5G BANDS	1, 2, 3, 4, 5, 7, 8, 9, 10, 12, 13, 14, 17, 18, 19, 20, 22, 25, 26, 27, 28, 29, 30, 33, 34, 35, 36, 37, 38, 39, 40, 41, 42, 43, 44, 48, 49, 52, 53, 65, 66, 67, 68, 69, 71, 85, 103, n77, n78, n80, n81, n82, n83, n84, n86, n89, n90, n95, n97, n98, n100, n101
GAIN	617 - 960 MHz : 2 dBi 1.7 - 2.7 GHz : 4 dBi 3.3 - 4.3 GHz : 4.5 dBi
VSWR	<2.00, max <2.50
BEAMWIDTH	360°/25° ±5°
POLARIZATION	Vertical
IMPEDANCE	50 Ω

MECHANICAL SPECIFICATION

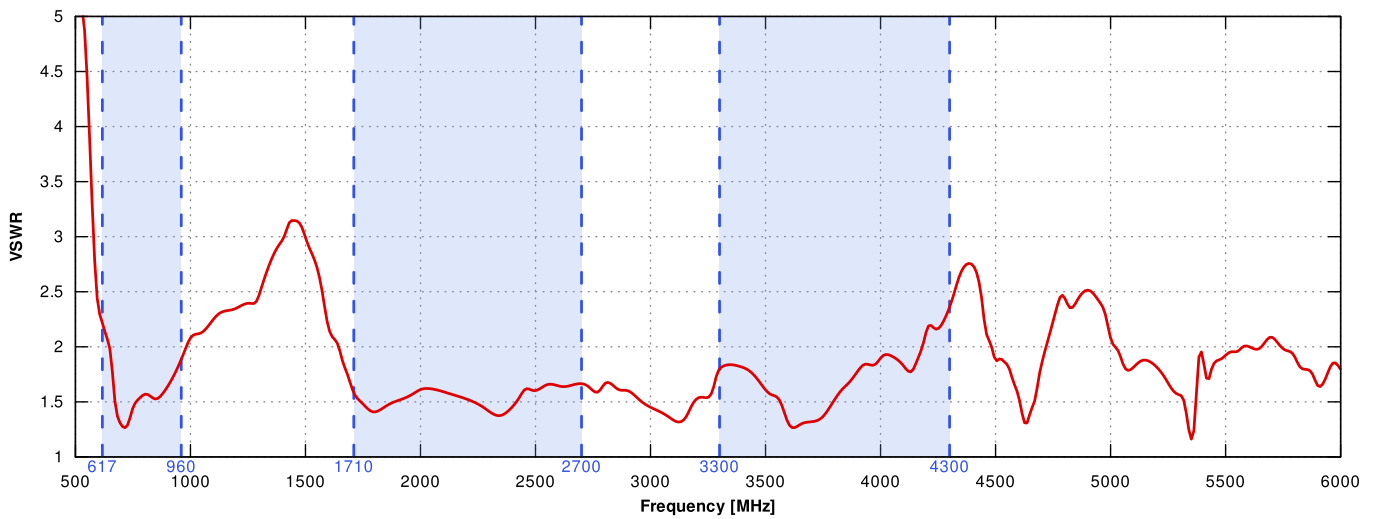
MATERIALS	ABS, aluminum, PTFE
CONNECTOR TYPE	RJ45
INGRESS PROTECTION	IP67
DIMENSIONS	160 x 160 x 240 mm 6.3 x 6.3 x 9.45 inch
WEIGHT	1.5 kg 3.31 lbs
OPERATING TEMPERATURE	From -40°C to 75°C From -40°F to 167°F

FREQUENCY BANDS

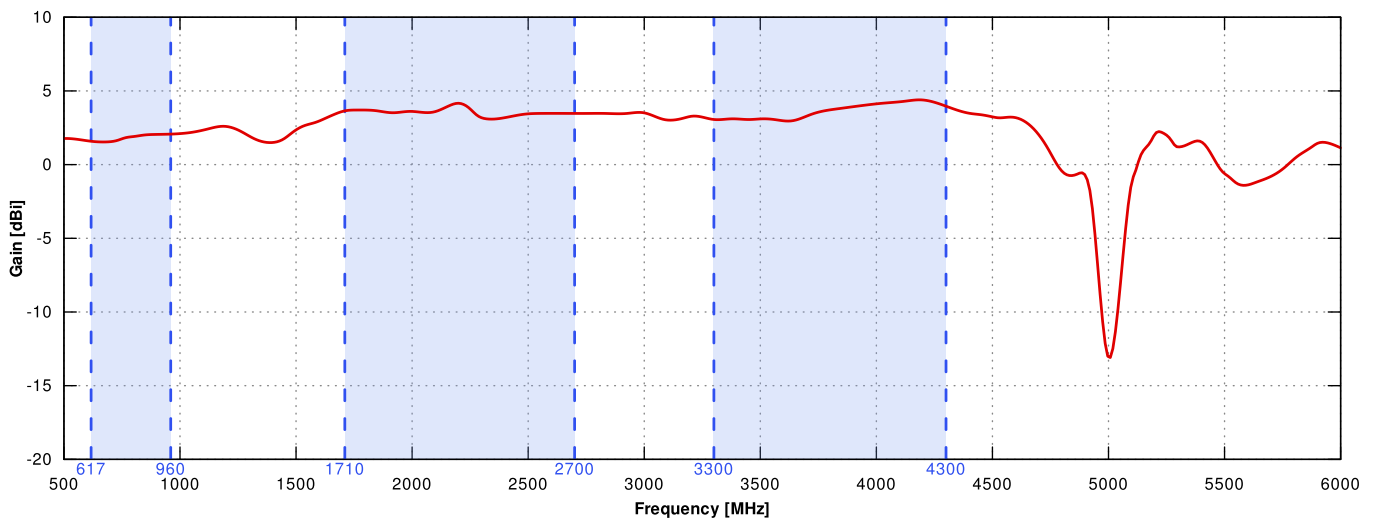
LTE / 4G GSM	5, 8, 12, 13, 14, 17, 18, 19, 20, 26, 27, 28, 29, 44, 67, 68, 85, 103	617 MHz, 960 MHz
LTE / 4G UMTS	1, 2, 3, 4, 9, 10, 25, 33, 34, 35, 36, 37, 39, n80, n84, n86, n95, n98, n101	1710 MHz, 2170 MHz
LTE / 4G	7, 38, 69	2400 MHz, 2700 MHz

PLOTS

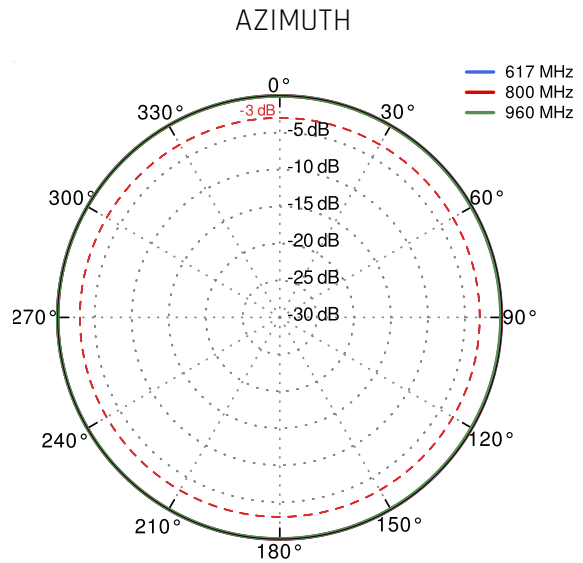
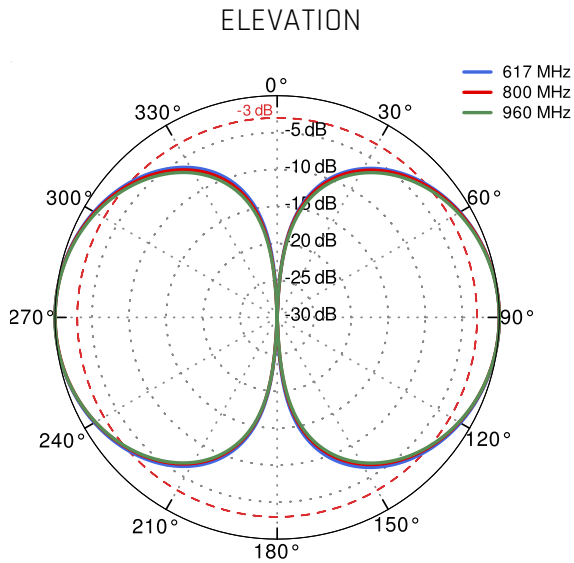
VSWR for 5G/LTE antenna



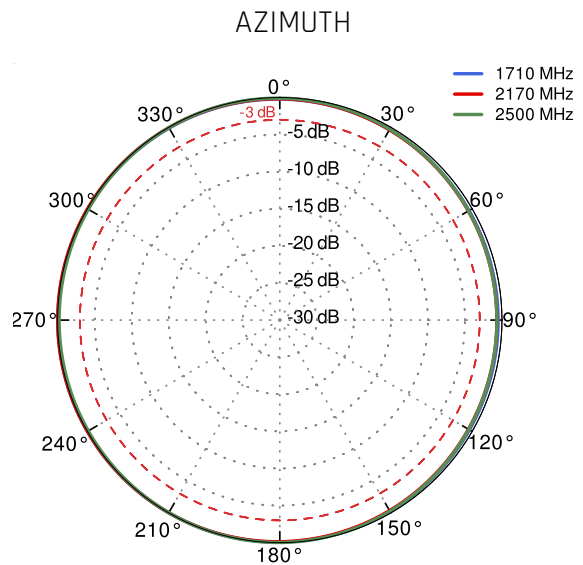
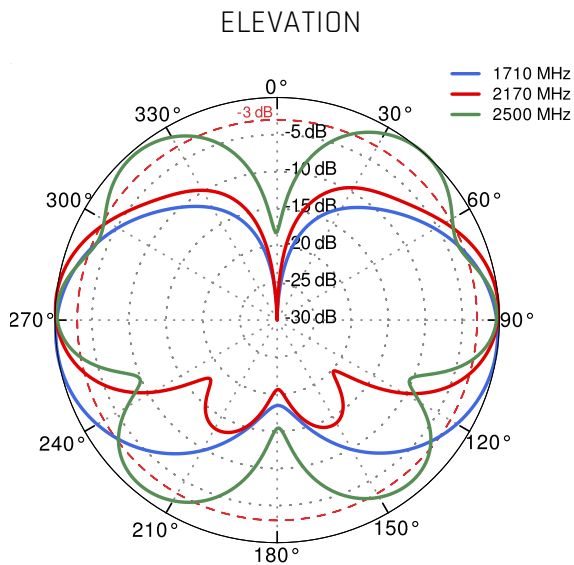
Gain for 5G/LTE antenna



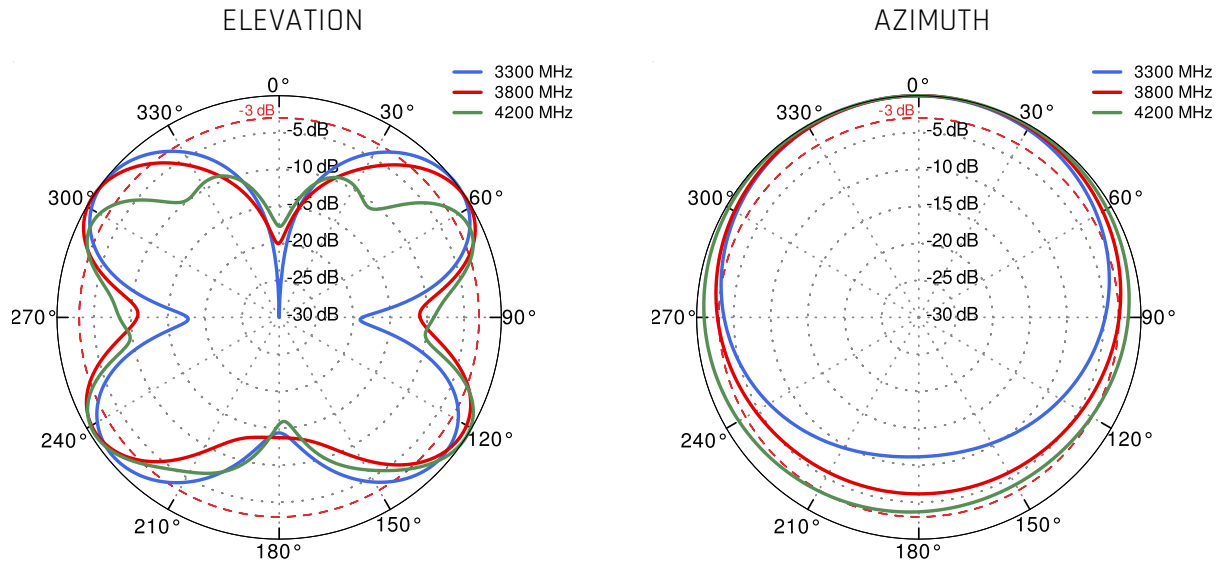
5G/LTE from 617MHz to 960MHz



5G/LTE from 1.71GHz to 2.5GHz



5G/LTE from 3.3GHz to 4.2GHz




DIMENSIONS

